

WELCOME

Electoral Area G - Saltair Saltair Centennial Park Revitalization

This is your opportunity to review the results of the surveys conducted in 2018/2019 and to re-affirm the priorities that the community has expressed for the future of Saltair Centennial Park. There are many ways to provide feedback:

- ▶ **PLACESPEAK** Leave a comment through the online platform found at www.PlaceSpeak.com/saltaircentennialparkplan
- ▶ **WEBSITE / EMAIL** Visit us at www.cvrd.ca//3367/Saltair-Centennial-Park-Revitalization email us your thoughts and ideas to: tanya.soroka@cvrd.bc.ca
- ▶ **QUESTIONNAIRE** Fill out a short questionnaire found on the website and email to: tanya.soroka@cvrd.bc.ca or mail it to:
CVRD, 175 Ingram Street,
Duncan BC V9L1N8

This park is one of several local parks, pathways and beach accesses in Saltair maintained by the Cowichan Valley Regional District through local taxpayer funding. In 2021 the annual tax requisition to maintain local parks, pathways and beach accesses in Saltair is \$140,170, or \$18.68 per \$100,000 household property value for Saltair residents.

Saltair Centennial Park is a 5.85 hectare community park located in Electoral Area G Saltair/Gulf Islands, between South Oyster School Road and Mountain View Drive.

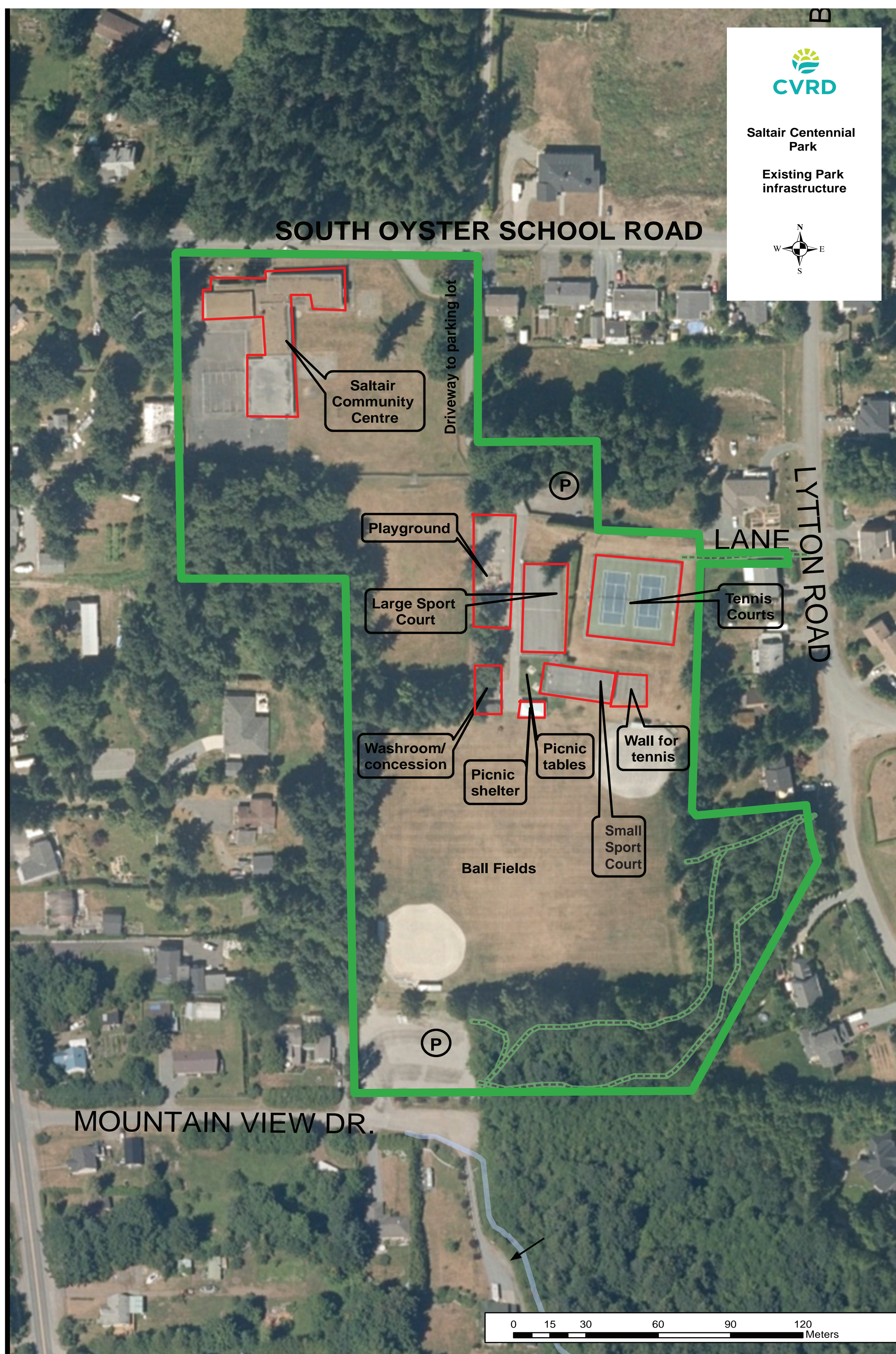
The park has been built up over the years with various park amenities inclusive of:

- tennis courts (late 1970's/early 1980's), resurfaced 2006
- concession and washroom building (1991), Updated 2015.
- original playground (1990's), replaced in 2009.
- roller hockey court (1998),
- north parking lot (1999),
- picnic shelter (2000).
- ball diamonds with dugouts.



SALTAIR CENTENNIAL PARK OVERVIEW MAP

What currently exists in the park



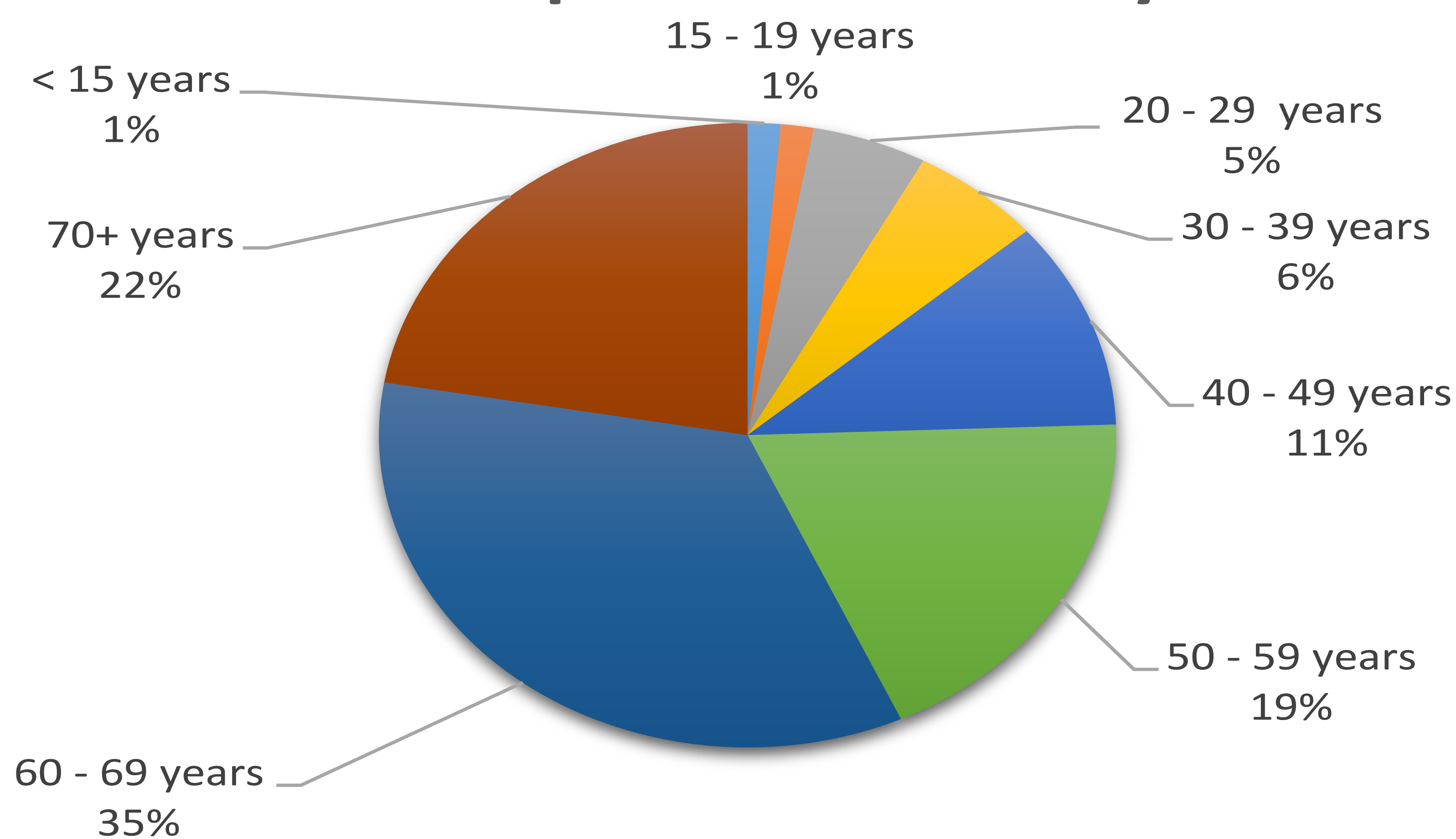
SURVEY RESULTS

During 2018 and 2019 a total of 177 surveys were collected for Saltair Centennial Park.

55 surveys collected in 2018,
73 surveys collected in hard copy in 2019, and
49 surveys collected through Placespeak in 2019.
All but one respondent use the park on a regular basis

Of those surveyed, 79% were Saltair residents. The results presented here are tabulated using only Saltair residents.

Age of Saltair residents who responded to survey

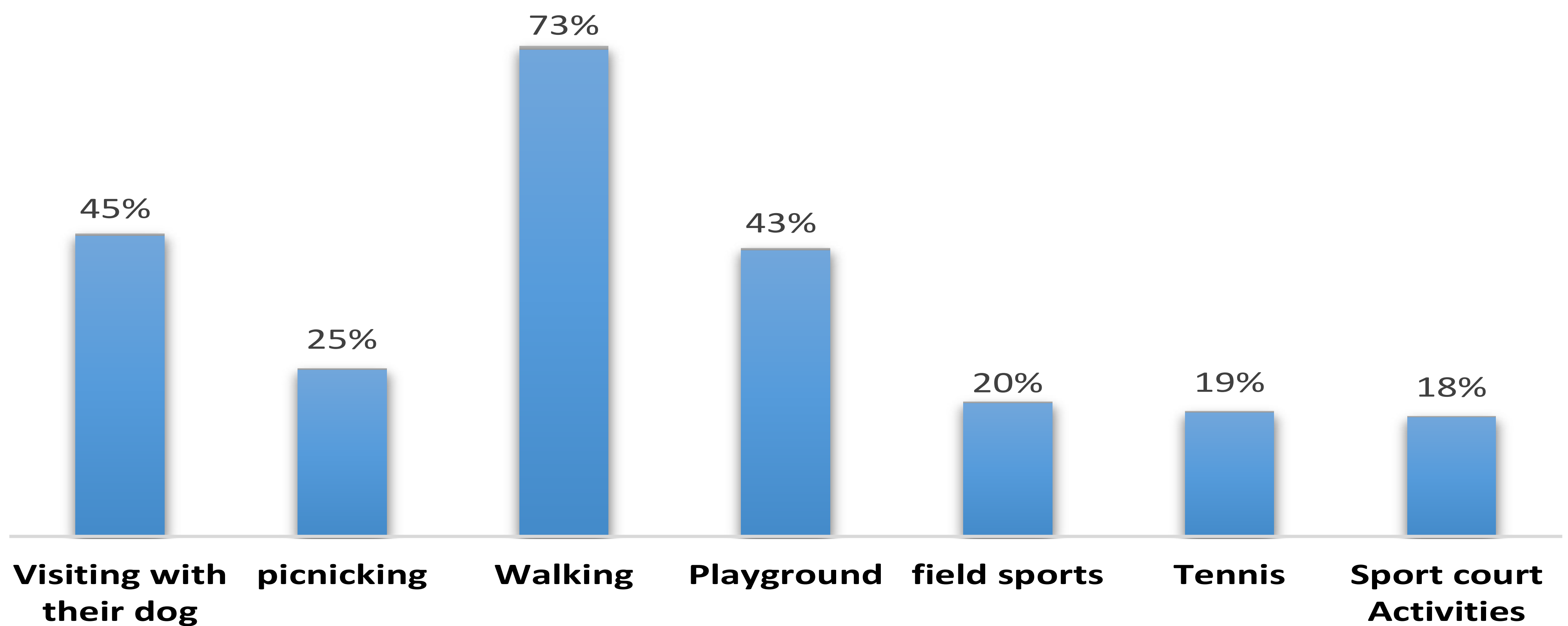


Statistics Canada notes the population of Saltair in 2016 was 2069 people, 51% were older than 60 years of age, 20% between 50-59 years of age and 8% between 40-49 years, which is consistent with the results of the Saltair residents who were surveyed as shown in the chart above.

How residents access Saltair Centennial Park

Approximately 55% of residents surveyed walk to the park, while 40% drive, and the remaining either bike or carpool. People visit the park fairly evenly throughout the year; summer (92%), fall (86%), winter (72%), spring (90%). Approximately 77% of residents surveyed visit between 1–2 hours at a time.

What do Saltair residents do in the park?



Saltair residents were asked what they usually do when they visit the park (picked from a drop down menu):

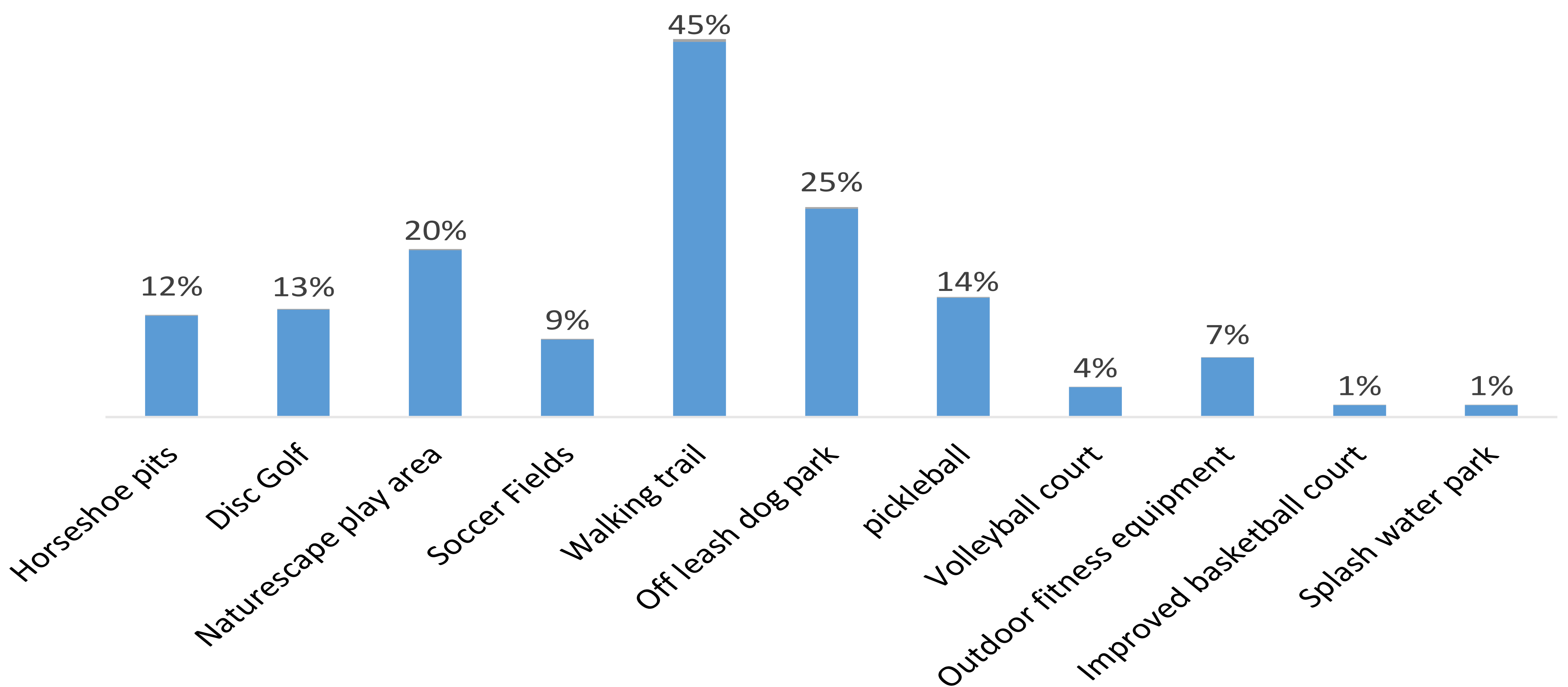
- walking (73%),
- visiting with their dog (45%),
- using the playground (43%),
- picnicking (25%),
- field sports (20%),
- playing tennis (19%) and
- using the sport courts (18%).

“other” things people do when they visit the park include:

- attend community events (<1%)
- watch Ball games/tournaments (<1%)
- jog/Cycle (<1%)
- bocce (<1%)
- visit with friends (<1%)

Of note, a high number of people older than 50 years of age are using the park, with the majority of these users either walking and/or walking with their dog.

What Saltair residents support for addition to the park



Residents were asked, over and above the existing amenities in the park what they support for addition.

- 45% of the respondents want additional walking trails
- 25% would like an off leash dog park
- 20% would like a new nature-scape play area
- 14% Pickleball court
- 13% disc golf course
- 12% horseshoe pits
- 9% soccer field
- 7% outdoor fitness equipment
- 4% volleyball
- 1% improved basketball court
- 1% splash water park

The following are other park amenities noted only once.

- community gardens
- expanded picnic shelter
- extra washrooms by Mountain view Road entrance
- adult oriented activities
- proper tennis back board
- outdoor stage for local music/theatre events
- drop in supervised and instructed sports
- more lawn bowling events and festivals
- games and activities for youth
- summer tea & chat
- low income housing
- toddler play equipment
- zip line for kids
- something for children (0-3 years)
- 1 more tennis court
- memorial tree area

Funding for park improvements

Those surveyed in 2019 were also asked whether a tax increase would be supported to fund park improvements and if so, how much of a tax increase would be supported. Of the 122 respondents surveyed, only those noted that they live in Saltair are included:

- 70% of Saltair respondents were not supportive of a tax increase.
- Those in favour were supportive of no more than \$5 per \$100,000 assessed value of one's home.

Draft Saltair Centennial Park Revitalization Plan

The following page provides a DRAFT Saltair Centennial Park Revitalization Plan highlighting existing and proposed new park amenities supported through the community survey feedback.

Pickleball was identified as a priority for development as the CVRD separately received a lot of input for the inclusion of Pickleball courts in the park

Questionnaire

Your feedback on the Questionnaire will assist in finalizing the Plan with ongoing park improvements over the next 10-20 years. The Questionnaire can be found on the CVRD website, PlaceSpeak or within Saltair Centennial Park attached to poster boards on the Sport Court fence.

