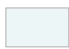

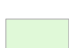
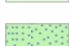


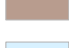
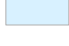


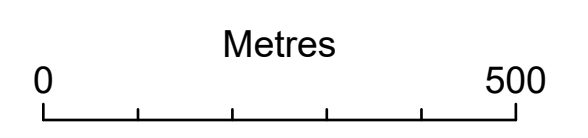
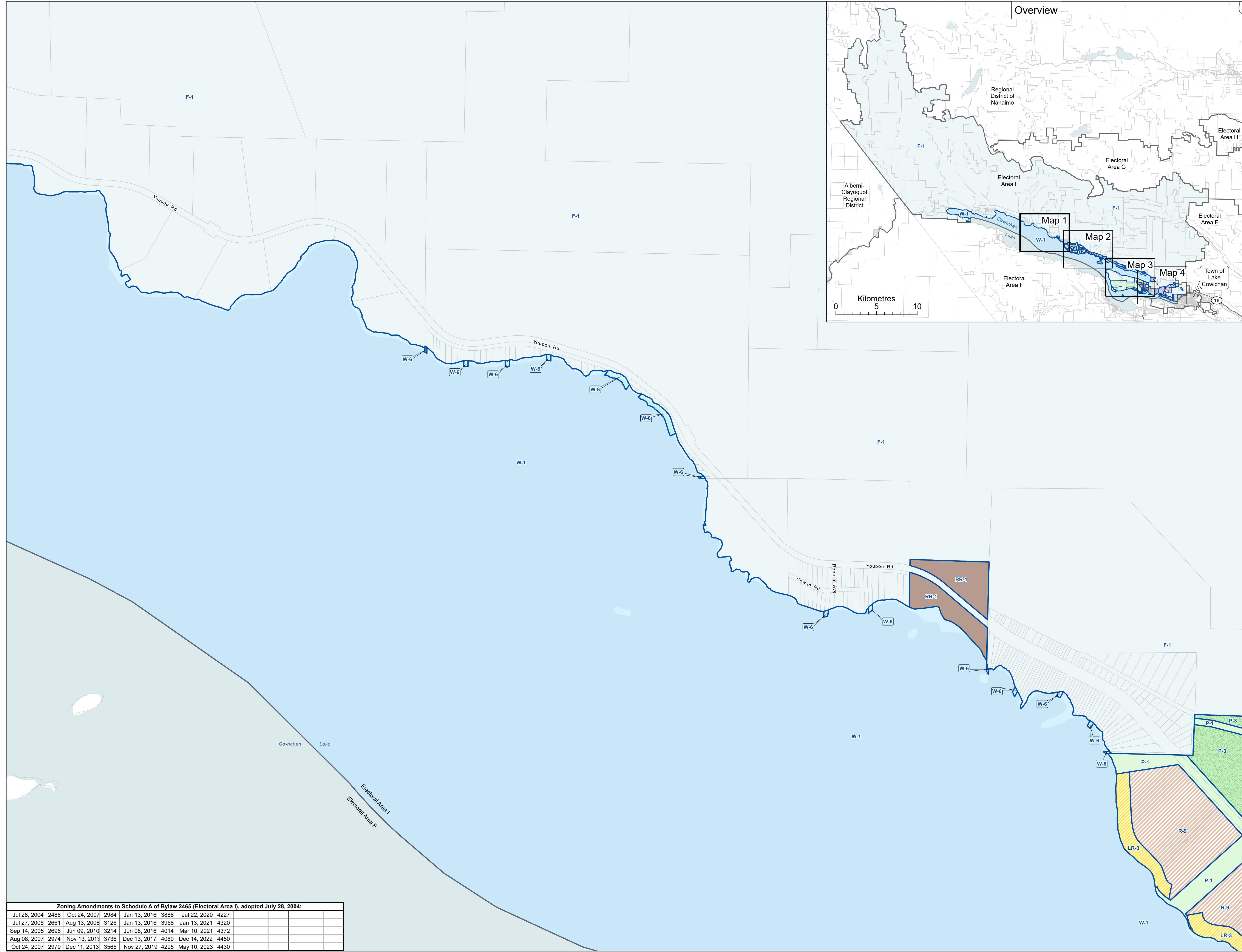
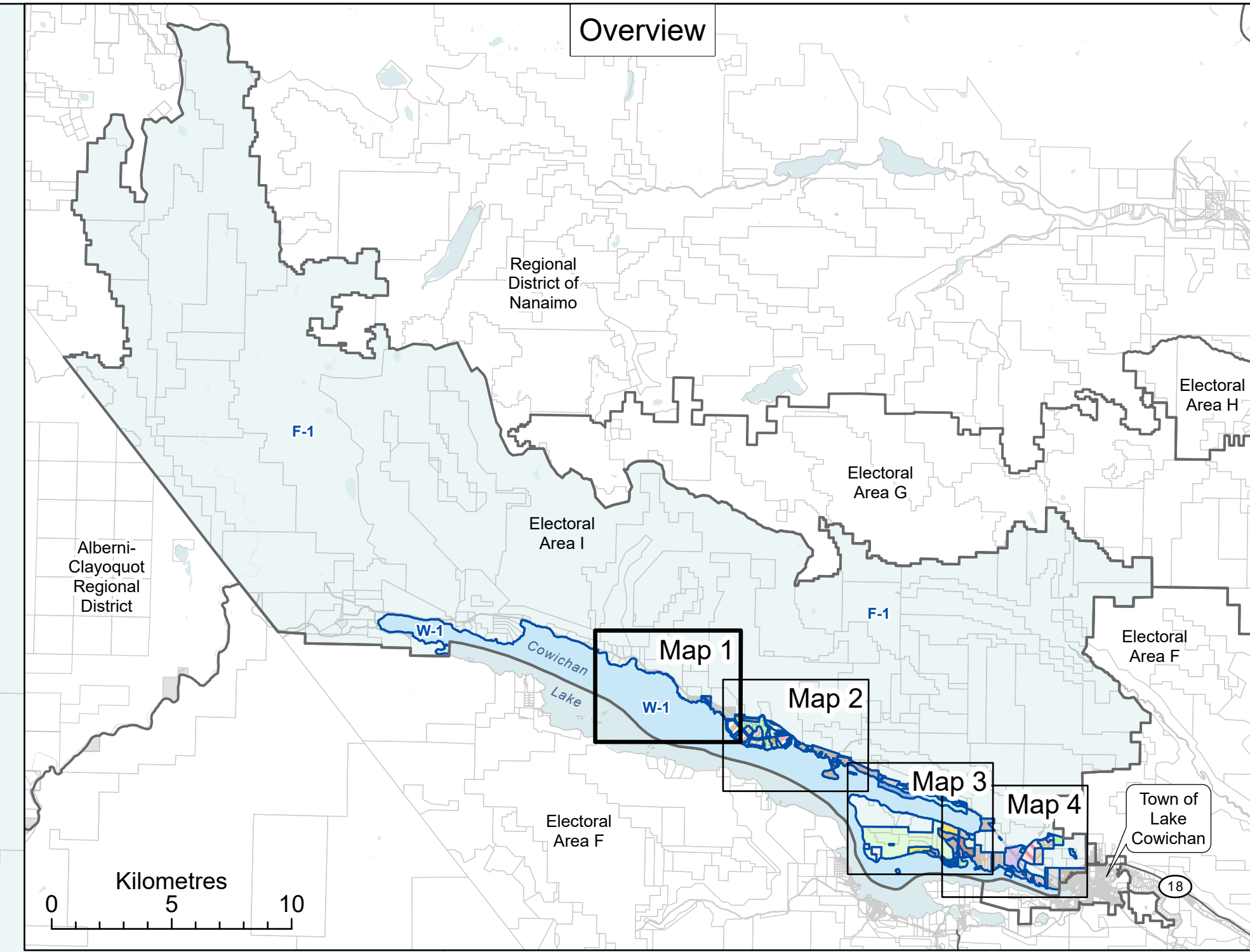


CVRD Zoning Bylaw No. 2465, 2004  
Electoral Area I  
Youbou/Meade Creek

Schedule A - Zoning Map  
Amended up to and including  
Bylaw 4430 - May 10, 2023

Map 1  
Zones

-  Zone Boundary
-  F-1 Forest Resource 1 I
-  LR-3 Lakefront Residential 3 I
-  P-1 Parks 1 I
-  P-3 Environmental Conservation 3 I
-  R-9 Residential 9 I
-  RR-1 Recreation Residential I
-  W-1 Water Conservation 1 I
-  W-6 Riparian Conservancy 6 I
- Reference Features
-  Parcels
-  Electoral Area Boundary



Consolidated for convenience only.  
Official copies of Bylaw 2465 Schedule A  
and all amending bylaws are held in the  
Cowichan Valley Regional District office.

Zoning Amendments to Schedule A of Bylaw 2465 (Electoral Area I), adopted July 28, 2004:							
Jul 28, 2004	2488	Oct 24, 2007	2984	Jan 13, 2016	3888	Jul 22, 2020	4227
Jul 27, 2005	2661	Aug 13, 2008	3126	Jan 13, 2016	3958	Jan 13, 2021	4320
Sep 14, 2005	2696	Jun 09, 2010	3214	Jun 08, 2016	4014	Mar 10, 2021	4372
Aug 08, 2007	2974	Nov 13, 2013	3736	Dec 13, 2017	4060	Dec 14, 2022	4450
Oct 24, 2007	2979	Dec 11, 2013	3565	Nov 27, 2016	4295	May 10, 2023	4430

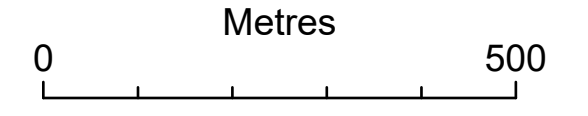
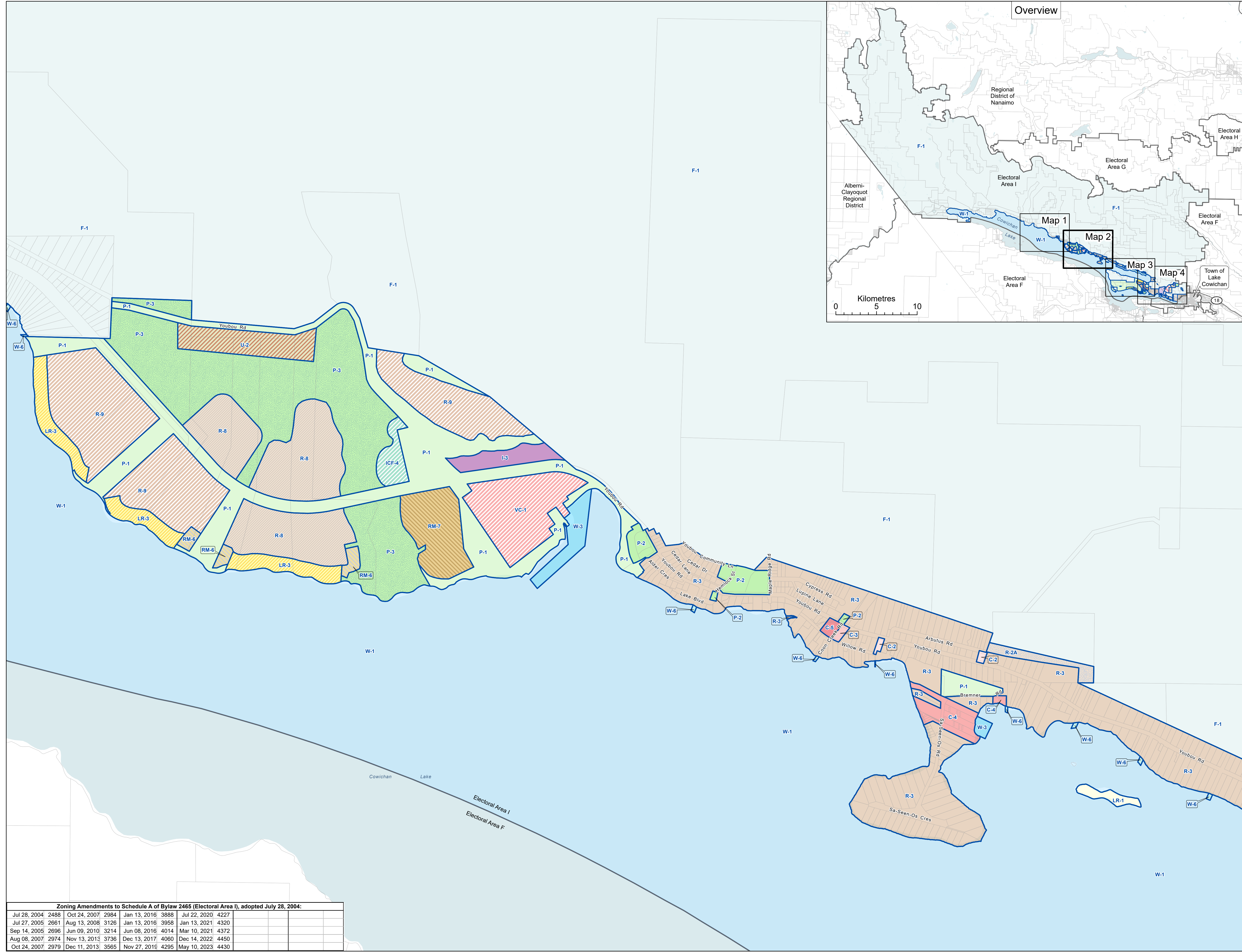
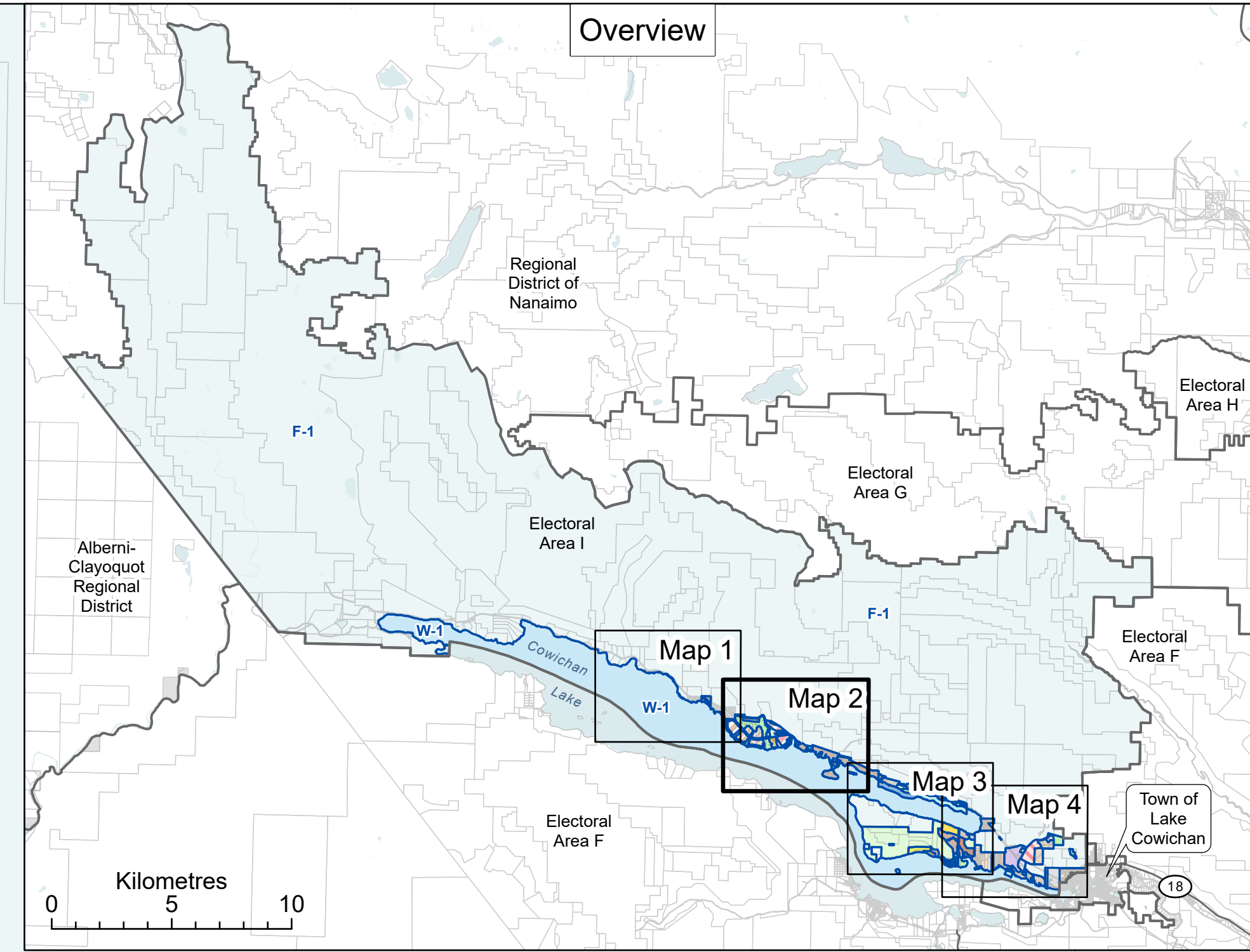


CVRD Zoning Bylaw No. 2465, 2004  
Electoral Area I  
Youbou/Meade Creek

Schedule A - Zoning Map  
Amended up to and including  
Bylaw 4430 - May 10, 2023

Map 2  
Zones

- Zone Boundary
- C-2 General Commercial 2 I
- C-3 Service Commercial 3 I
- C-4 Tourist Commercial 4 I
- C-5 Neighbourhood Pub Commercial 5 I
- F-1 Forest Resource 1 I
- I-3 Business Park Light Industrial 3 I
- ICF-4 Institutional and Community Facilities 4 I
- LR-1 Lakefront Residential 1 I
- LR-3 Lakefront Residential 3 I
- P-1 Parks 1 I
- P-2 Institutional 2 I
- P-3 Environmental Conservation 3 I
- R-2A Suburban Residential 2A I
- R-3 Urban Residential 3 I
- R-8 Residential 8 I
- R-9 Residential 9 I
- RM-6 Multiple Family Residential 6 I
- RM-7 Single and Multiple Family Residential 7 I
- U-2 Community Sewer Utility 2 I
- VC-1 Village Core 1 I
- W-1 Water Conservation 1 I
- W-3 Water Marina 3 I
- W-6 Riparian Conservancy 6 I
- Reference Features
- Parcels
- Electoral Area Boundary



Consolidated for convenience only.  
Official copies of Bylaw 2465 Schedule A  
and all amending bylaws are held in the  
Cowichan Valley Regional District office.

Zoning Amendments to Schedule A of Bylaw 2465 (Electoral Area I), adopted July 28, 2004:					
Jul 28, 2004	2488	Oct 24, 2007	2984	Jan 13, 2016	3888
Jul 27, 2005	2661	Aug 13, 2008	3126	Jan 13, 2016	3958
Sep 14, 2005	2696	Jun 09, 2010	3214	Jun 08, 2016	4014
Aug 08, 2007	2974	Nov 13, 2013	3736	Dec 13, 2017	4060
Oct 24, 2007	2979	Dec 11, 2013	3565	Nov 27, 2016	4295
				May 10, 2023	4430

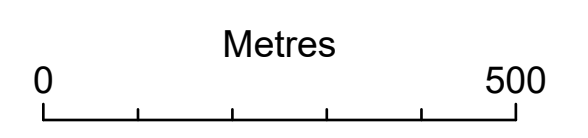
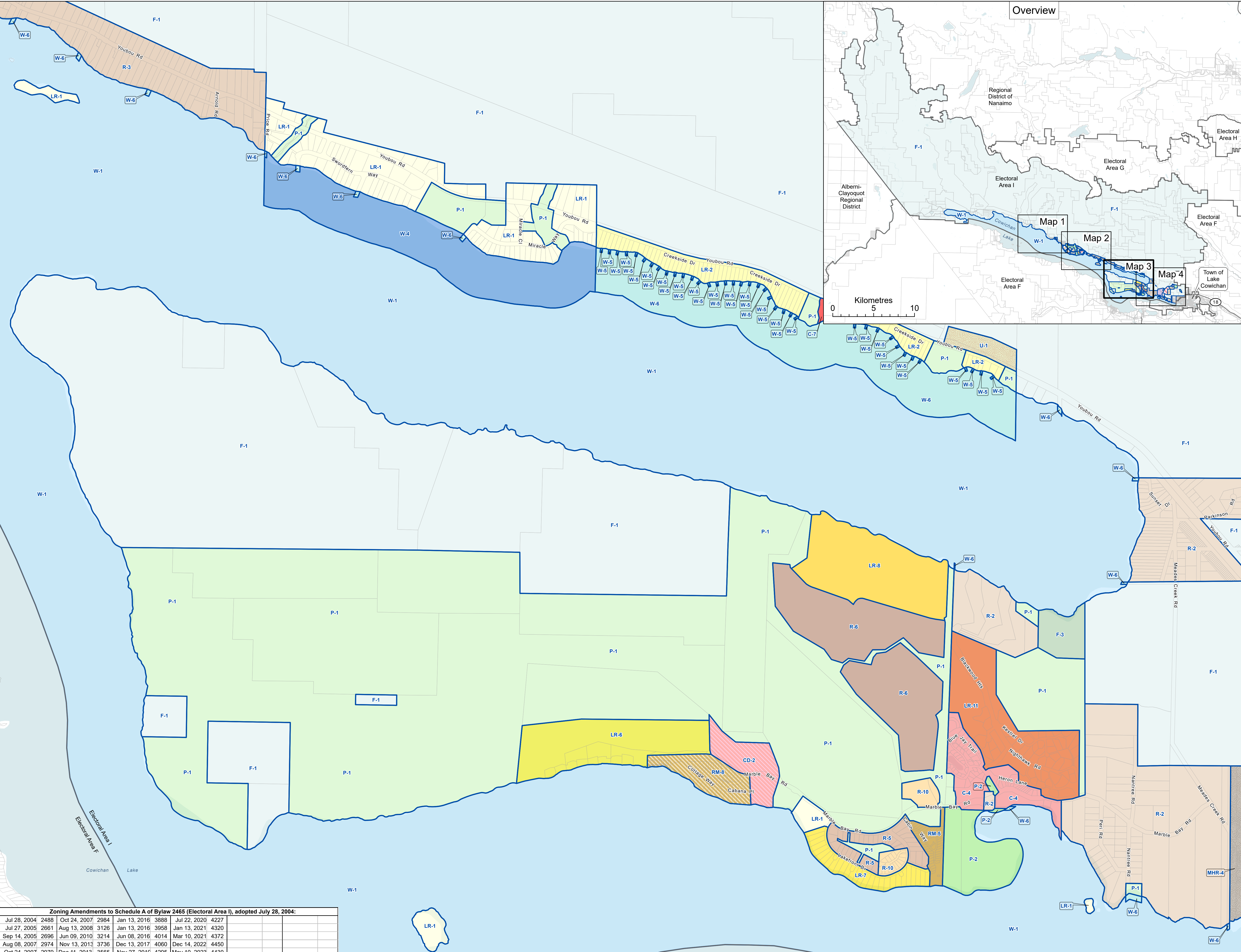
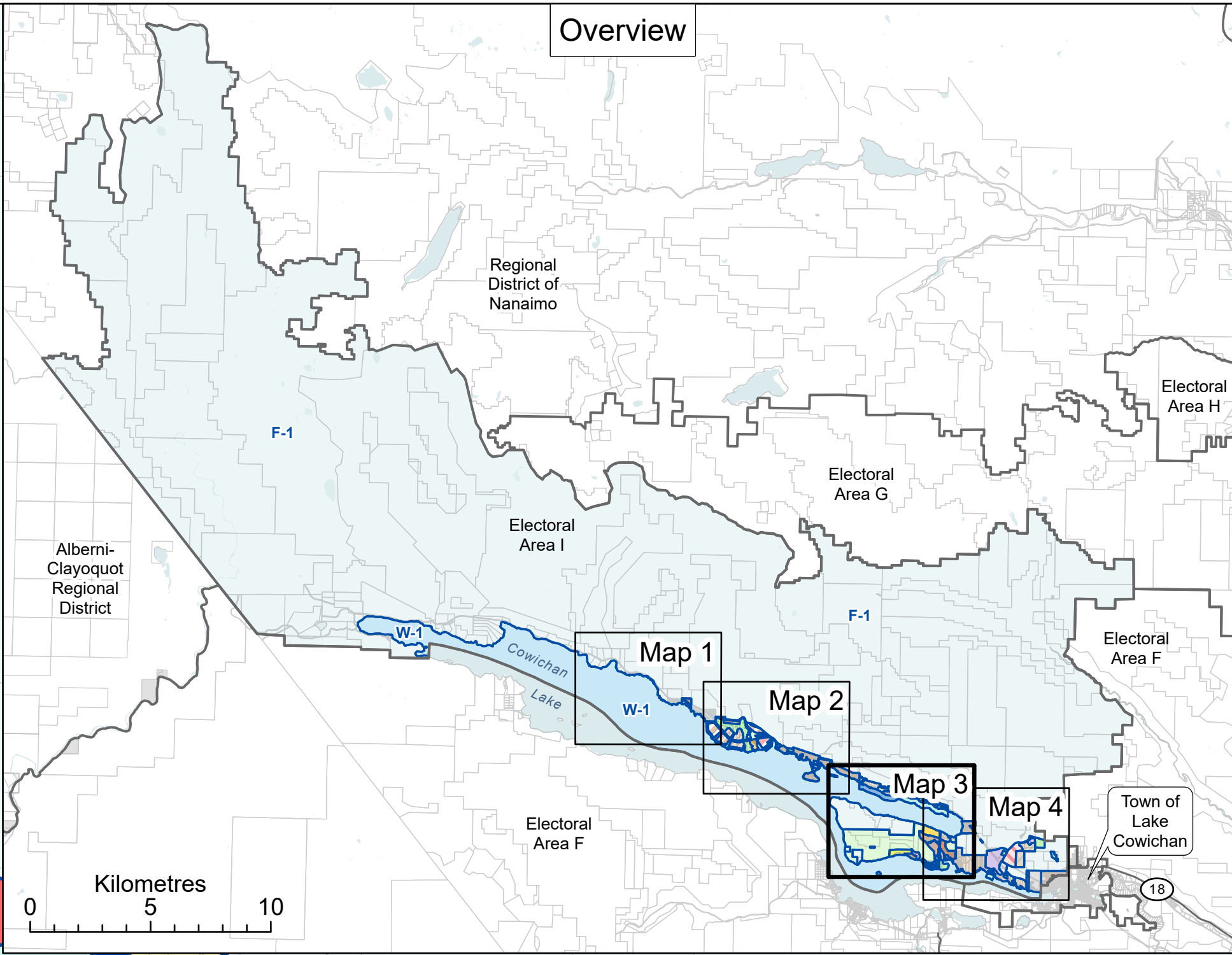


CVRD Zoning Bylaw No. 2465, 2004  
Electoral Area I  
Youbou/Meade Creek

Schedule A - Zoning Map  
Amended up to and including  
Bylaw 4430 - May 10, 2023

Map 3  
Zones

- Zone Boundary
  - C-4 Tourist Commercial 4 I
  - C-7 Waterfront Commercial 7 I
  - CD-2 Comprehensive Development 2 I
  - F-1 Forest Resource 1 I
  - F-3 Forestry Lakefront 3 I
  - LR-1 Lakefront Residential 1 I
  - LR-2 Lakefront Residential 2 I
  - LR-6 Bald Mountain Lakefront Cottage Residential 6 I
  - LR-7 Lakefront Residential 7 I
  - LR-8 Lakefront Residential 8 I
  - LR-11 Lakeview Recreational 11 I
  - MHR-4 Manufactured Home Park 4 I
  - P-1 Parks 1 I
  - P-2 Institutional 2 I
  - R-2 Suburban Residential 2 I
  - R-3 Urban Residential 3 I
  - R-5 Residential 5 I
  - R-6 Residential 6 I
  - R-10 Residential 10 I
  - RM-5 Multiple Family Residential 5 I
  - RM-8 Multiple Family Residential 8 I
  - U-1 Private Utility 1 I
  - W-1 Water Conservation 1 I
  - W-4 Lakefront Recreational 4 I
  - W-5 Lakefront Recreational 5 I
  - W-6 Riparian Conservancy 6 I
- Reference Features
- Parcels
  - Electoral Area Boundary



Consolidated for convenience only.  
Official copies of Bylaw 2465 Schedule A  
and all amending bylaws are held in the  
Cowanich Valley Regional District office.

Zoning Amendments to Schedule A of Bylaw 2465 (Electoral Area I), adopted July 28, 2004:							
Jul 28, 2004	2488	Oct 24, 2007	2984	Jan 13, 2016	3888	Jul 22, 2020	4227
Jul 27, 2005	2661	Aug 13, 2008	3126	Jan 13, 2016	3958	Jan 13, 2021	4320
Sep 14, 2005	2696	Jun 09, 2010	3214	Jun 08, 2016	4014	Mar 10, 2021	4372
Aug 08, 2007	2974	Nov 13, 2013	3736	Dec 13, 2017	4060	Dec 14, 2022	4450
Oct 24, 2007	2979	Dec 11, 2013	3565	Nov 27, 2016	4295	May 10, 2023	4430



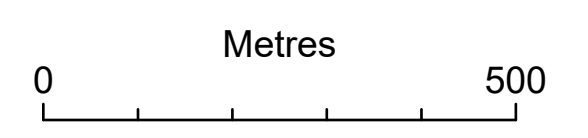
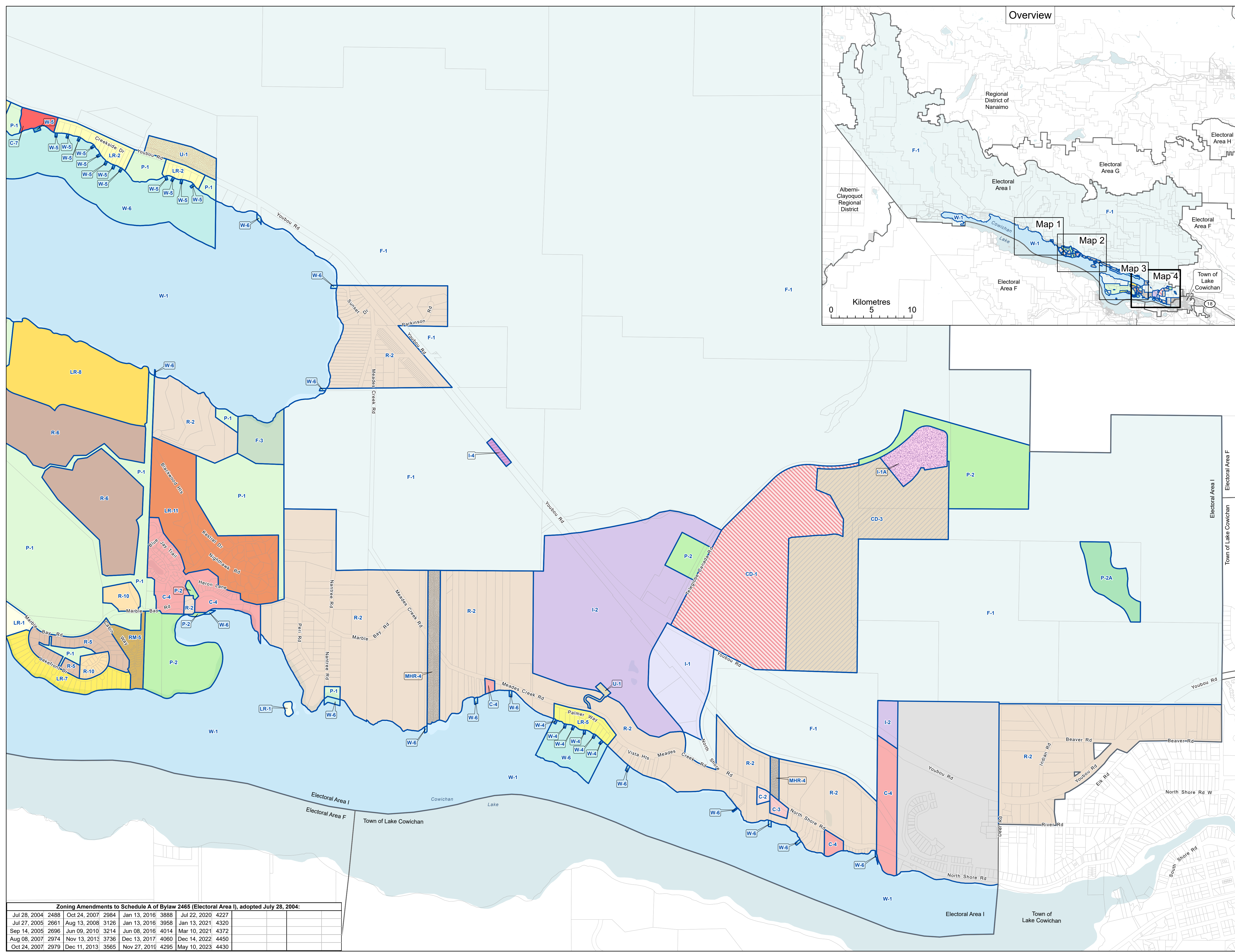
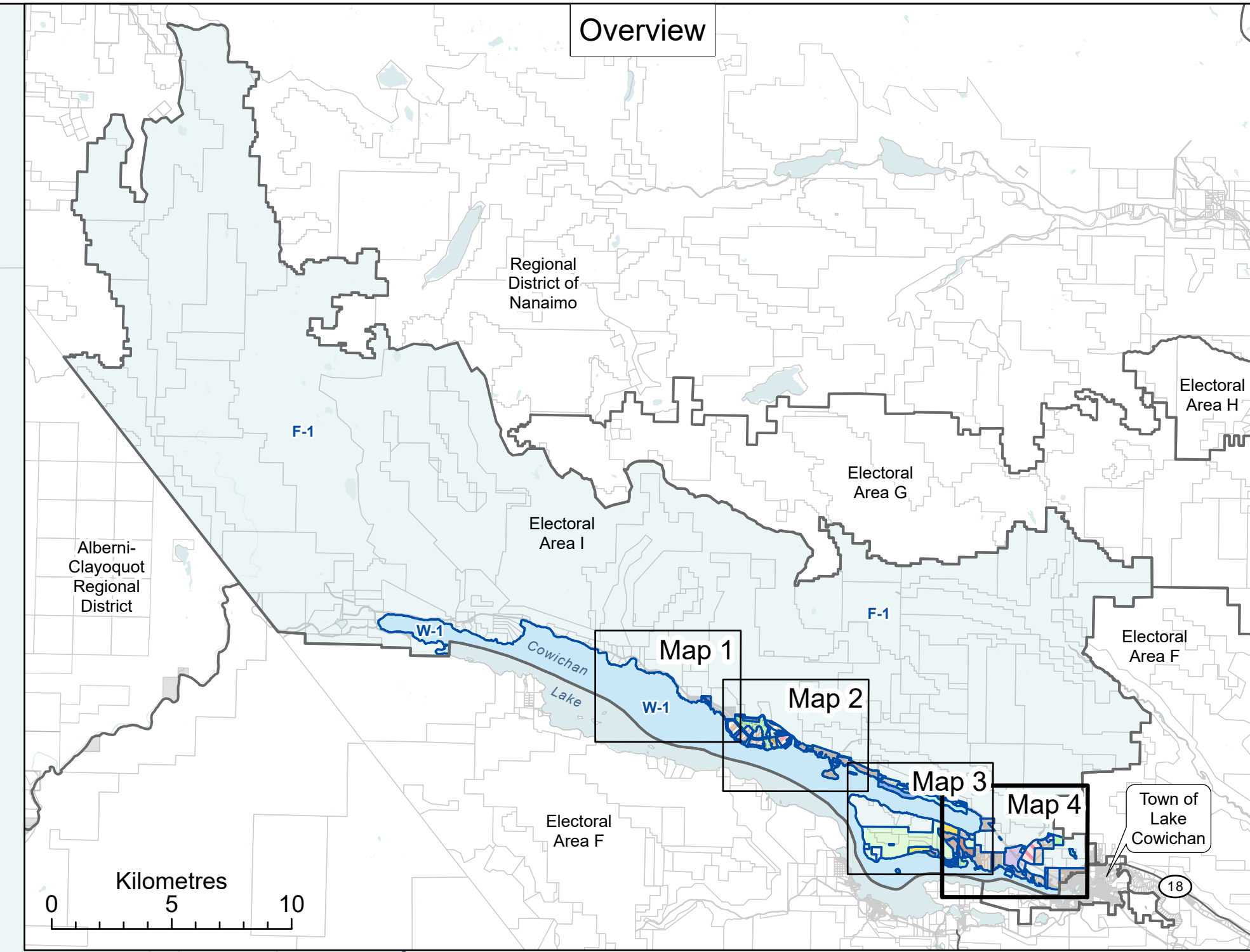
CVRD Zoning Bylaw No. 2465, 2004  
Electoral Area I  
Youbou/Meade Creek

Schedule A - Zoning Map  
Amended up to and including  
Bylaw 4430 - May 10, 2023

Map 4  
Zones

- Zone Boundary
- C-2 General Commercial 2 I
- C-3 Service Commercial 3 I
- C-4 Tourist Commercial 4 I
- C-7 Waterfront Commercial 7 I
- CD-1 Comprehensive Recreational 1 I
- CD-3 Laketown Residential I
- F-1 Forest Resource 1 I
- F-3 Forestry Lakefront 3 I
- I-1 Light Industrial 1 I
- I-2 Heavy Industrial 2 I
- I-4 Recreational Vehicle Storage Industrial 4 I
- LR-1 Lakefront Residential 1 I
- LR-2 Lakefront Residential 2 I
- LR-5 Lakefront Residential 5 I
- LR-7 Lakefront Residential 7 I
- LR-8 Lakefront Residential 8 I
- LR-11 Lakeview Recreational 11 I
- MHR-4 Manufactured Home Park 4 I
- P-1 Parks 1 I
- P-2 Institutional 2 I
- P-2A Institutional Retreat I
- R-2 Suburban Residential 2 I
- R-5 Residential 5 I
- R-6 Residential 6 I
- R-10 Residential 10 I
- RM-5 Multiple Family Residential 5 I
- U-1 Private Utility 1 I
- W-1 Water Conservation 1 I
- W-4 Lakefront Recreational 4 I
- W-5 Lakefront Recreational 5 I
- W-6 Riparian Conservancy 6 I

- Reference Features
- Parcels
  - Electoral Area Boundary
  - Indian Reserve



Consolidated for convenience only.  
Official copies of Bylaw 2465 Schedule A  
and all amending bylaws are held in the  
Cowichan Valley Regional District office.

Zoning Amendments to Schedule A of Bylaw 2465 (Electoral Area I), adopted July 28, 2004:							
Jul 28, 2004	2488	Oct 24, 2007	2984	Jan 13, 2016	3888	Jul 22, 2020	4227
Jul 27, 2005	2661	Aug 13, 2008	3126	Jan 13, 2016	3958	Jan 13, 2021	4320
Sep 14, 2005	2696	Jun 09, 2010	3214	Jun 08, 2016	4014	Mar 10, 2021	4372
Aug 08, 2007	2974	Nov 13, 2013	3736	Dec 13, 2017	4060	Dec 14, 2022	4450
Oct 24, 2007	2979	Dec 11, 2013	3565	Nov 27, 2016	4295	May 10, 2023	4430